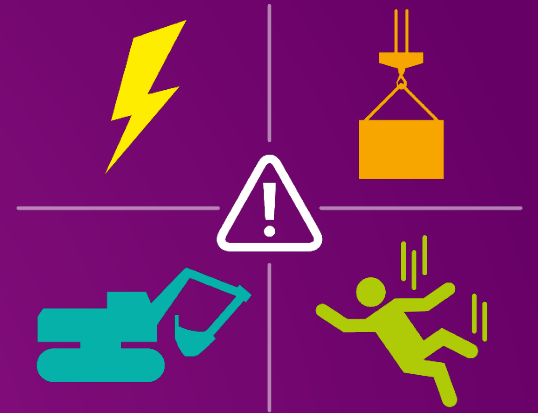


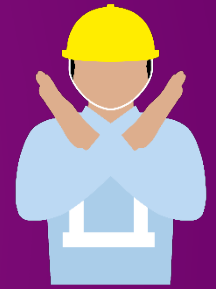


CONSTRUCTION
INDUSTRY COUNCIL
建造業議會



LIFEFIRST

Say **NO** To Danger



Work Safely Before and After Holiday



Foreword

The period before and after the long holiday were vulnerable to accidents. Both employers and employees should enhance their awareness and preventive measures as well as implement a comprehensive safety management system.

The purpose of this material with "Life First Videos" is to provide keynotes of safety precautions for certain high-risk activities. Site management should cascade the safety message to workers and ensure relevant safety measures have been implemented before and after the holiday.



Hot Work

Before Holiday

- Clear working station
- Detach all hoses and place equipment in designated area
- Ensure welding set has been shut off
- Ensure no kindling materials left

After Holiday

- Inspect all equipment and ensure in good working conditions
- No flammable materials nearby and equip with fire extinguisher
- Be equipped with proper PPE

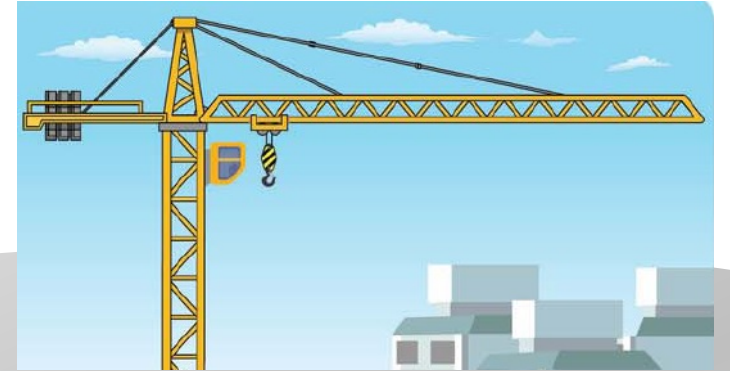


Lifting Gear



Before Holiday

- Clear work station and materials
- Inspect the lifting gear and store in proper location
- Lock the cabin of the machine and properly kept by responsible person
- The trolley of the crane with horizontal trolley jib should be placed near to the tower at minimum radius and the hook should be raised to its highest position;



After Holiday

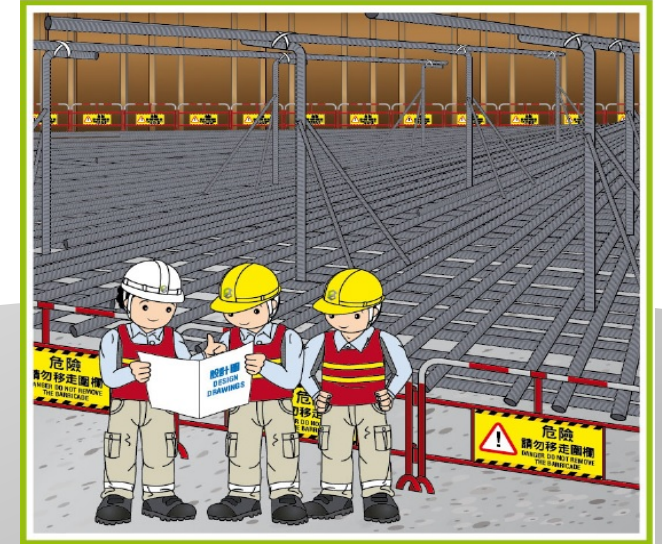
- Inspect the LALG and ensure no defect
- Confirm the SWL before using the lifting gear



Temporary Structure

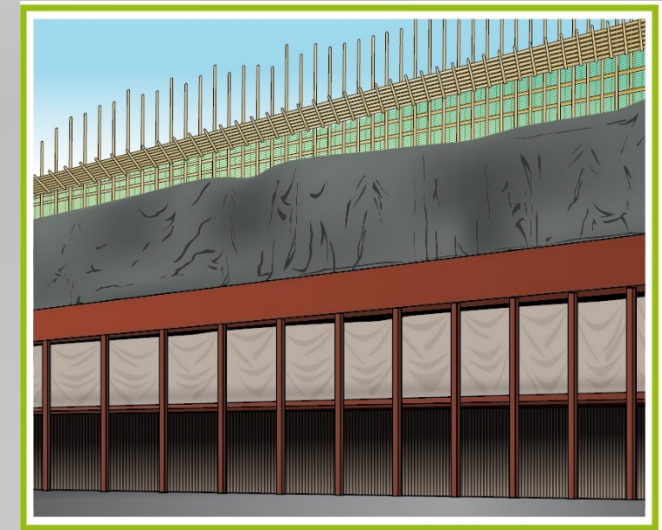
Before Holiday

- Check all temporary structures and make sure they are safe and secure
- Remove of tools, materials and waste from temporary structures
- Enclose temporary structures to prevent unauthorized access
- Display appropriate warning notices in the area of temporary structures



After Holiday

- Inspection and testing of temporary structures by designated competent persons
- If the stability of the temporary structure is affected in any way, its stability should be reassessed and reinforced



Electricity Appliances



Before Holiday

- Ensure all electrical equipment and devices are powered off
- Close and lock the electrical distribution box and manage it by a designated person
- Display appropriate warning notices



After Holiday

- Check electrical equipment and installations by registered electricians and ensure its safe condition
- Make sure to connect the power supply correctly before work



Working Platform



Before Holiday

- Mobile Working Platform to be parked to the designated position or dismantle it
- MEWP ,to stay at lowest position, to be parked and locked at designated position
- Remove tools, materials and rubbish from working platform



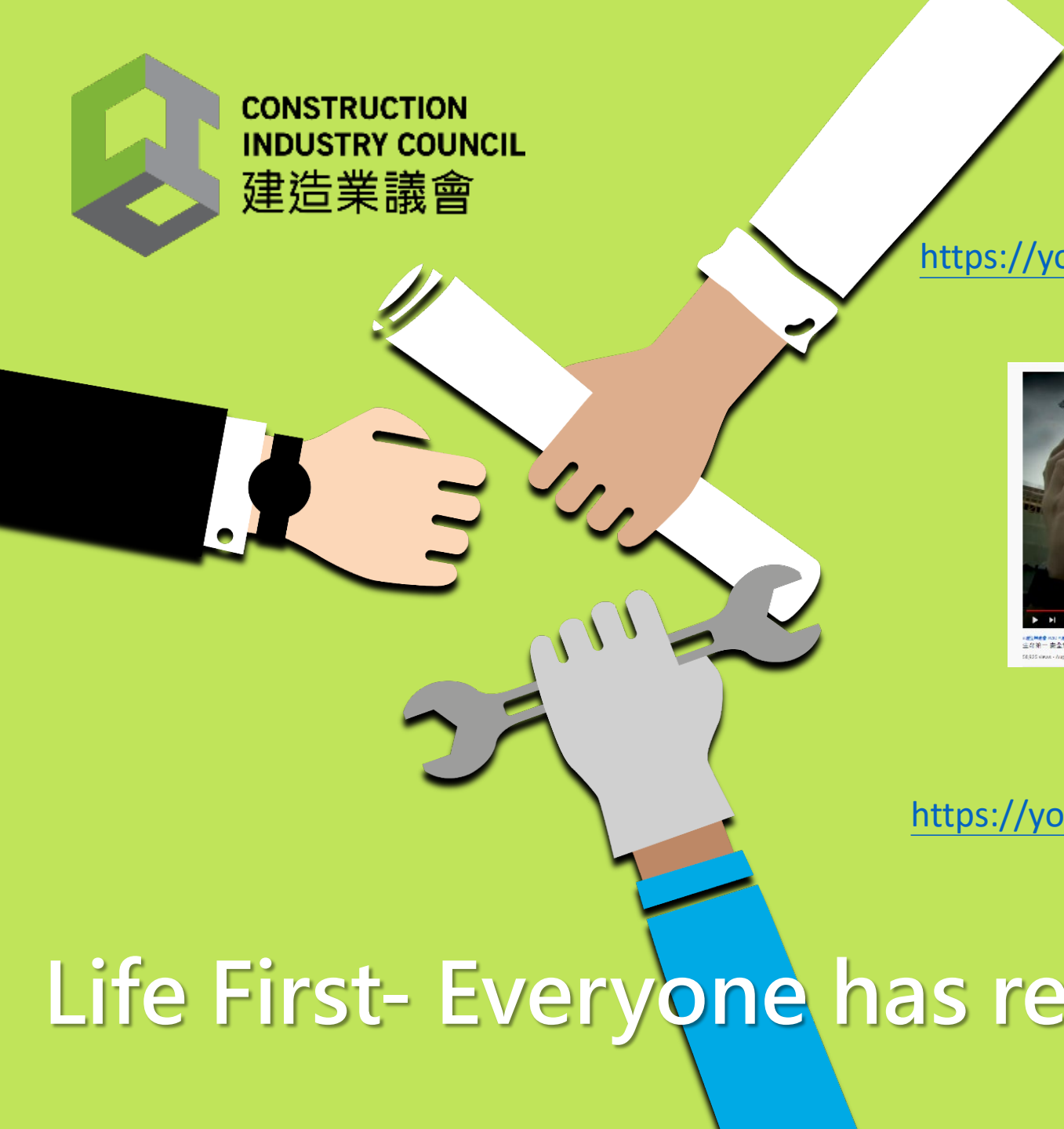
After Holiday

- If the working platform has been modified, it must be checked by a competent person
- Ensure the MEWP has been inspected and ensured safety before continue to use





CONSTRUCTION
INDUSTRY COUNCIL
建造業議會



Life First- Safety Video

Management

https://youtu.be/JdDvJ5z_05Q



Frontline Supervisors

https://youtu.be/P4K_loqa6Sg

Workers

<https://youtu.be/916LoXFWm90>



Life First- Everyone has responsibility

